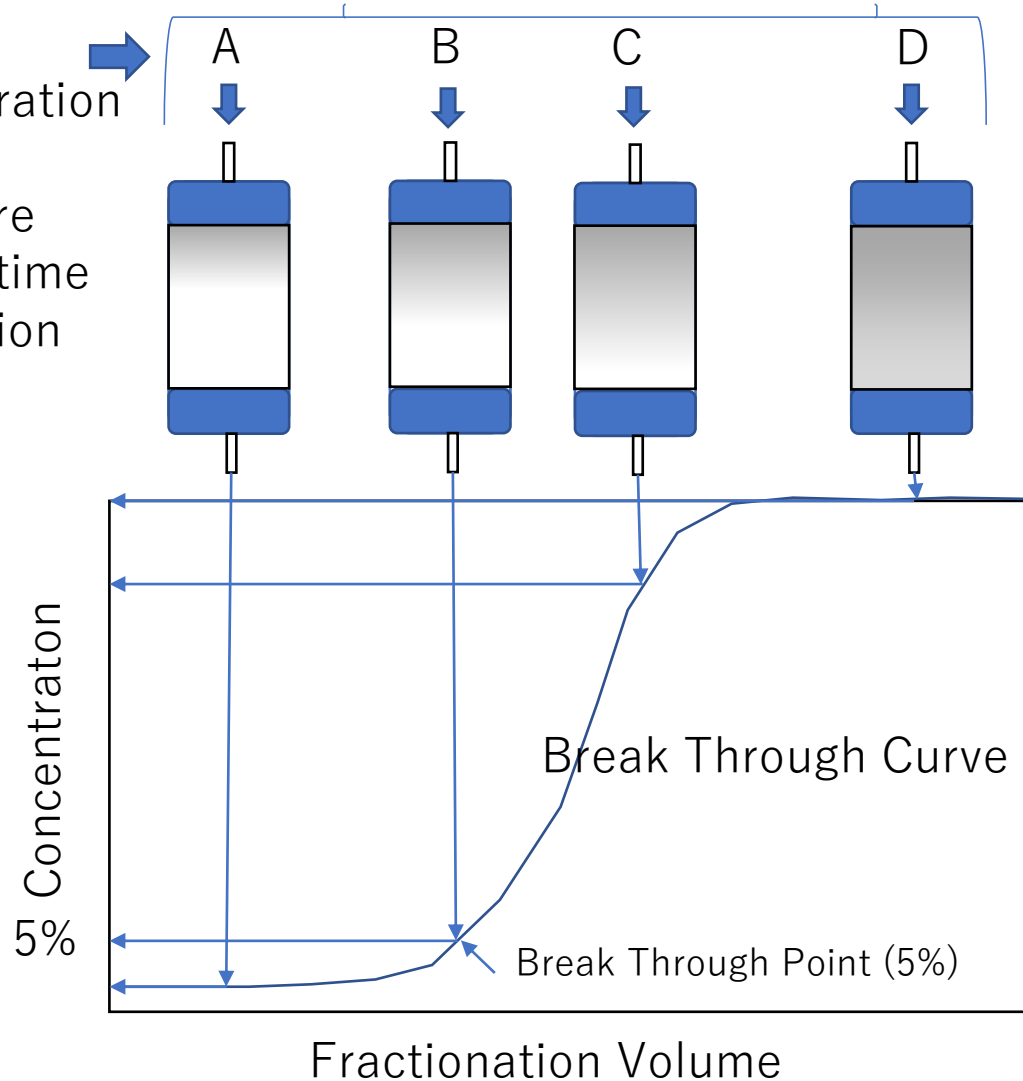


Break Through Point for Capturing

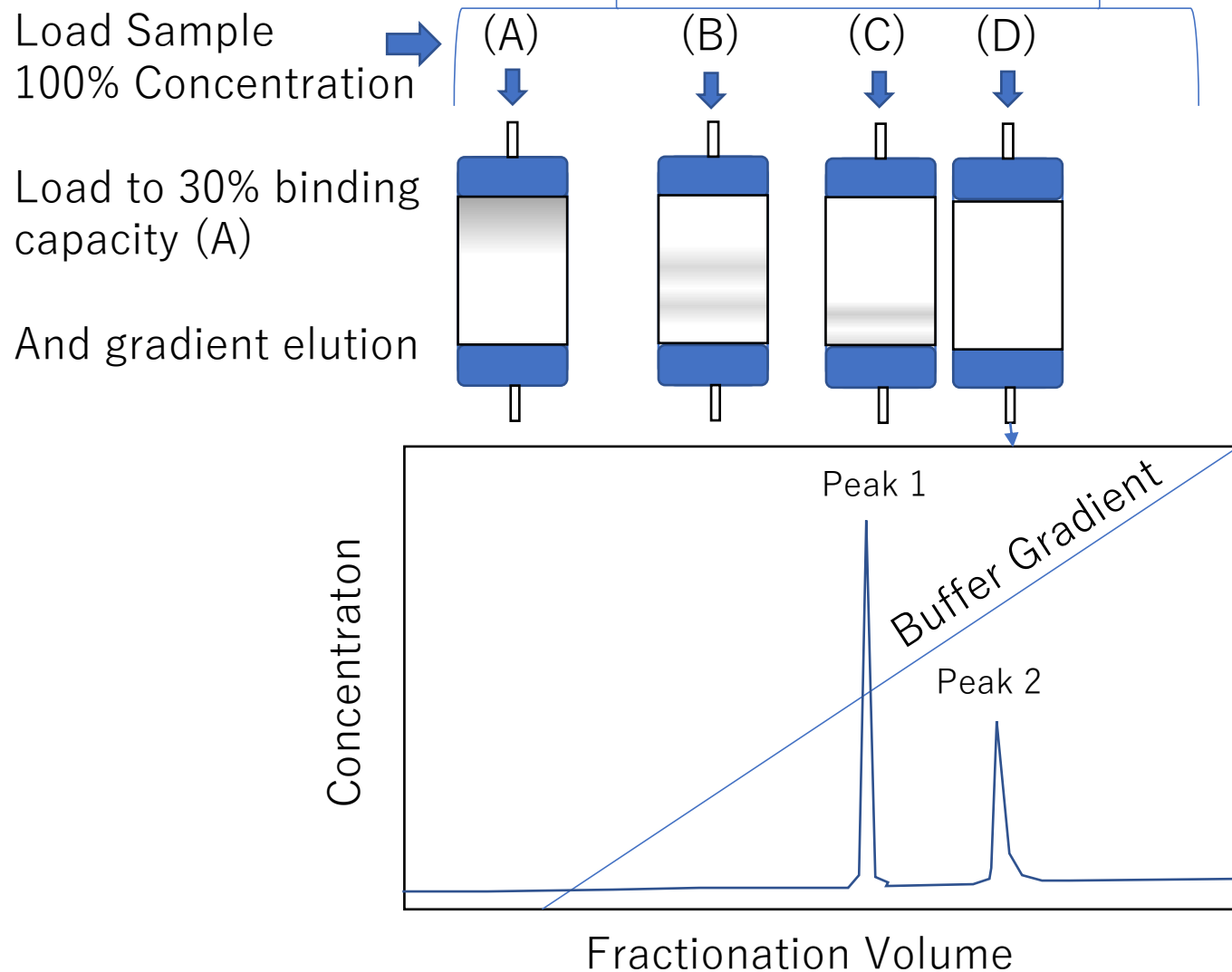
Load Sample
100% Concentration

1. Temperature
2. Residence time
3. Concentration



- Generally, Binding capacity of load sample is evaluated by 5% break through point.
- Therefore, the binding amount sample is 95% on the resin in column,
- Break through point is easy move by the conditions of temperature, residence time and sample concentration.
- It should not be changed this parameter.

Lower Loading for Gradient purification

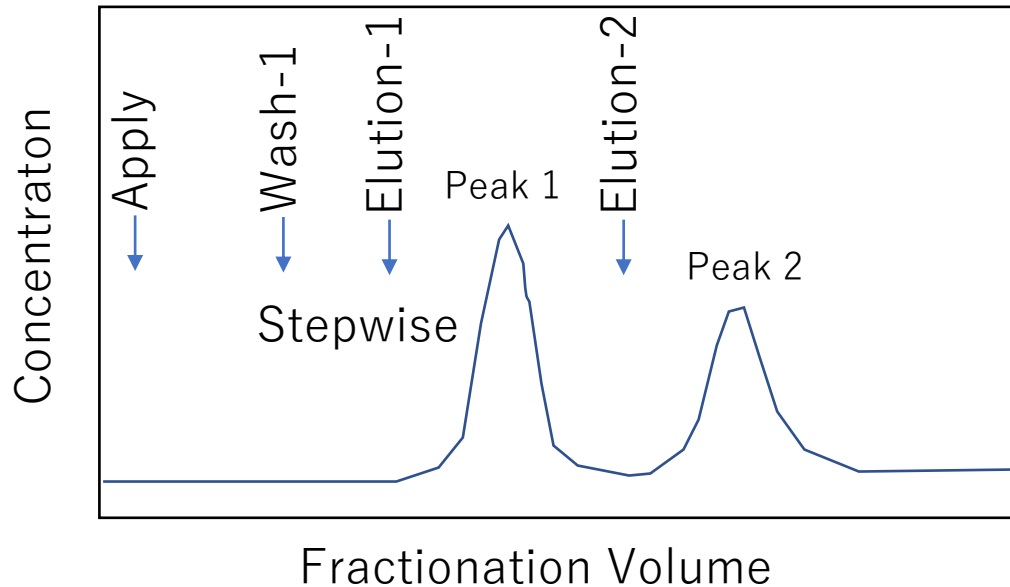
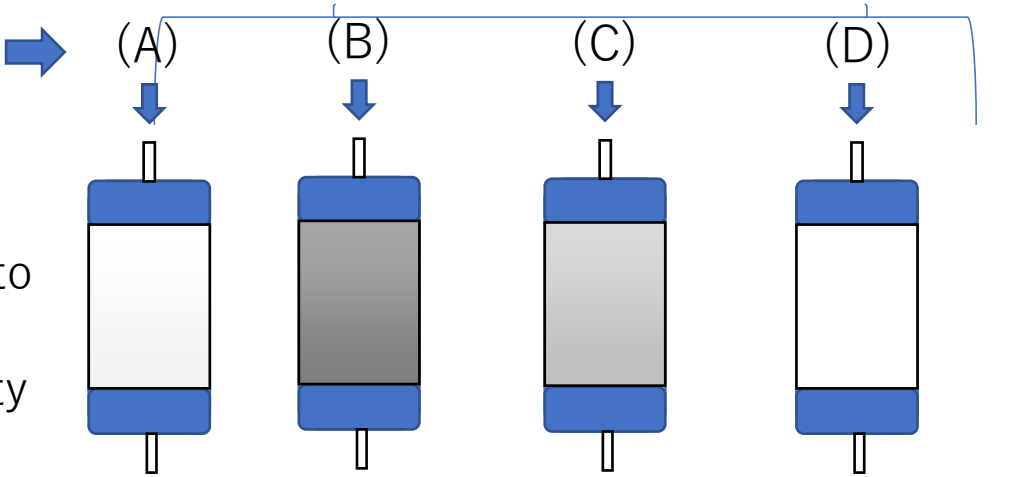


- Lower loading sample for gradient wise purification
- The contents are separated in the column with interaction between protein and resin.
- Generally, load sample amount is 30% of binding capacity.
- It is worth that to develop the load amount more.

Maximum Loading for Stepwise purification

Load Sample
100%
Concentration

Load to >30% to
95% from
binding capacity



- Maximum loading sample (Apply) for stepwise chromatography purification.
- Washing buffer condition is evaluated at least target protein not leak.
- Elution buffer condition is evaluated at least target protein (Peak-1) just elution without Peak-2 protein not leak.